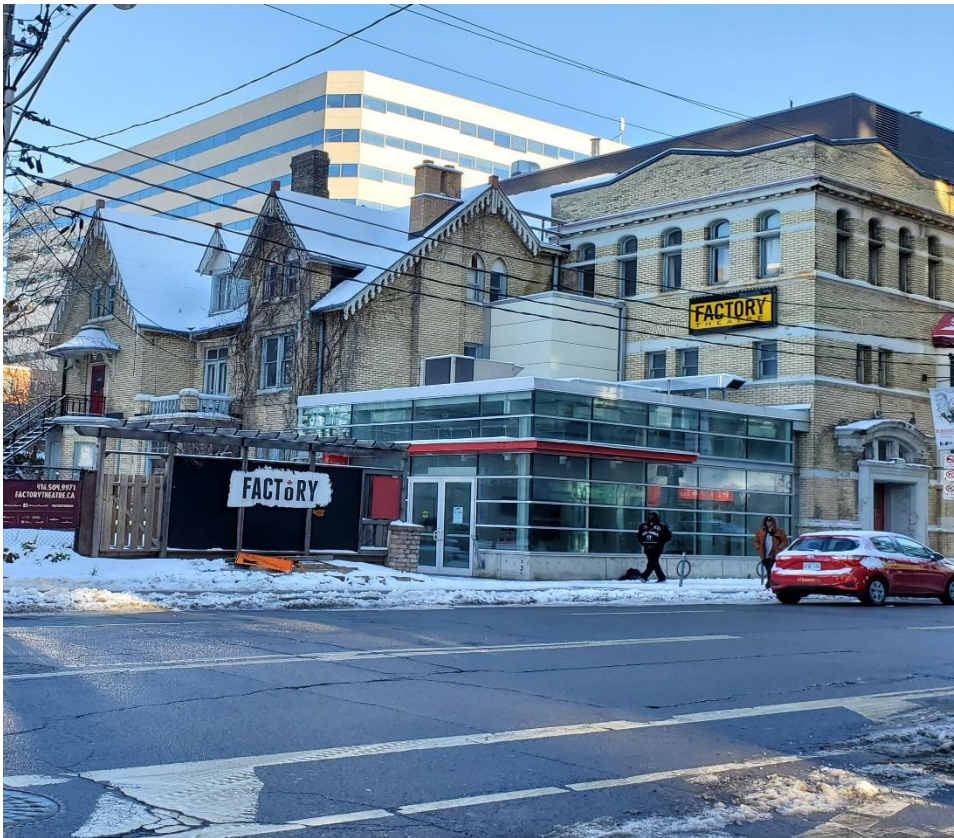




Factory Theatre's Visual Story

This package aims to support autistic individuals, people with learning disabilities and those with English as a second language. It can be used to help anyone access and understand their experience in the building.



Need more information or would you like to schedule a familiarization visit?

Contact Lucy Coren | Associate Producer

Email: lucy@factorytheatre.ca **Phone:** (416) 504 4473 ext. 228

Table of Contents

How to Get Here – p. 3

The Building – p. 5

The Entrance – p. 5

The Box Office / Picking Up Tickets – p. 6

The Elevator – p. 8

Studio Theatre – p. 9

Mainspace – p. 10

How to Get Here

Factory Theatre is located at 125 Bathurst Street in Toronto. It's right at the corner of Bathurst Street and Adelaide.



This picture shows our theatre's location with a red pin on a map of the surrounding area.

Factory Theatre is accessible by a number of different options. Here are a few for you to choose from.

TTC:

From Bathurst station, take the 511 streetcar. The streetcar will take you south down Bathurst Street. Get off at the Queen Street West stop. You will cross the street to the south-west corner of Queen Street, and continue walking 2 blocks down Bathurst Street. This will take you to the corner of Bathurst and Adelaide. Simply cross at the lights and you've made it to Factory!

Take the 504 King streetcar and get off at Bathurst Street. Cross at the lights so that you're on the north-east corner of Bathurst Street and King Street. Walk 1 block north on Bathurst Street. Cross at the lights and you're at Factory!

Take the 505 Queen bus and get off at Bathurst Street. Cross at the lights so that you're on the south-east corner of Queen Street and Bathurst Street. Walk 2 blocks south on Bathurst Street to the corner of Bathurst Street and Adelaide Street. You've arrived at Factory!

CAR:

While Factory does not have public parking, there are a number of streets that allow paid parking nearby. There is a parking lot located at Richmond and Portland Street.

The Building

The Entrance to the Building

The main entrance to our building is just off of Bathurst Street on Adelaide Street. It has double-doors and an automated button on the right-hand side. If you press it this will open the left-side door for you. If you have any issue with the automated door, or if you need any assistance our staff members are happy to help.



The Box Office + Picking Up Tickets

This is a picture of our box office and the Box Office Lobby. A ticket is required to see a performance at Factory. You can pick up purchased tickets or buy a ticket here.



If you are picking up a ticket you already bought they will ask you for your first name and last name to help find the ticket.

The Box Office Lobby has the entrance to both of our theatres: The Studio and the Mainspace. Each theatre has its own lobby, bar and **toilets**. You may enter the theatre lobby 45 minutes before a performance. We seat audience members 30 minutes before the show.



The Elevator

The Elevator takes you to the second floor where our Mainspace theatre and **accessible toilets** are located. The elevator can be used independently by you. If you do require any assistance using the elevator, then any member of Factory's staff would be happy to help!



Studio Theatre

The entrance to the Studio Theatre is through the Box Office Lobby. When you enter the Studio Theatre you will see a seating area to your right. To your left are the toilets. In front of you is the bar.

30 minutes before the start of the performance we will begin seating audience members. Simply give your ticket to the usher and they will direct you to your seat. If you need any assistance locating your seat, simply let an usher know and they'll take you right to it.



This is what the seating looks like in the Studio Theatre.

Our Studio Theatre seats up to 100 people. This is what it looks like when it is bare; that means that there is no set on the stage.



It might look a bit different on your visit because the performance that you're seeing could have a set or props to help tell the story.

Mainspace

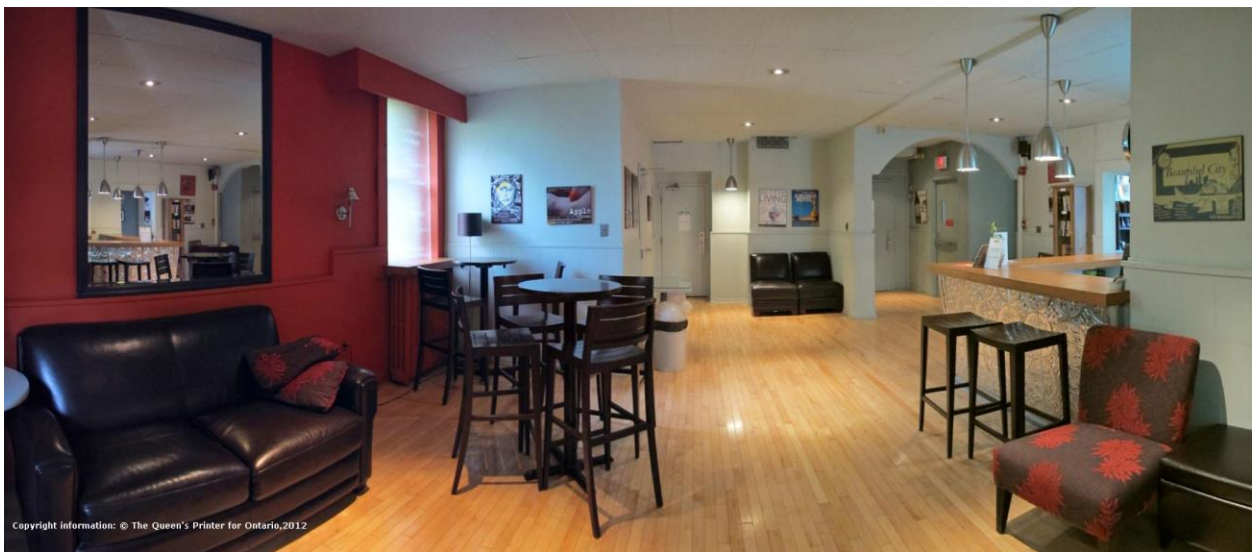
The entrance to the Mainspace Theatre is through the Box Office Lobby. There are 2 flights of stairs that will take you there. There is also an elevator in the Box Office Lobby which can take you to the Mainspace as well.



The Mainspace also has its own lobby with a bar and toilets. The way to access the bar or toilets looks a little bit different depending on if you enter the Mainspace lobby from the stairs, or from the elevator.



This is the view of the Mainspace Lobby from the Elevator on the Second Floor



Copyright information: © The Queen's Printer for Ontario, 2012

This is the view of our Mainspace Lounge, from the back of the room

Our Mainspace Theatre seats up to 200 people. This is what it looks like when it's bare; that means that there is no set on the stage.



It might look a bit different in your visit because the performance you're seeing could have a set or props to help tell the story.

30minutes before the start of the performance we will start seating audience members. Simply give your ticket to the usher and they will direct you to your seat. If you need any assistance locating your seat, simply let an usher know and they'll take you right to it.



This is what the seating in the Mainspace looks like.

All that's left is to sit back, relax and enjoy the show!